

**ACTION TAKEN REPORT OF STECK HOLDER FEEDBACK**

**Year 2018-2019**

**BY**

**ACADEMIC COMMITTEE**

**MIDSR DENTAL COLLEGE AND HOSPITAL**

**LATUR**

**Chairman**  
Dr Amol Dofode

**Principal**  
Dr. Suresh Kamble



**Convener**  
Dr Poonam Nagargoje

**ACADEMIC COMMITTEE  
MIDSR DENTAL COLEGE ,LATUR**

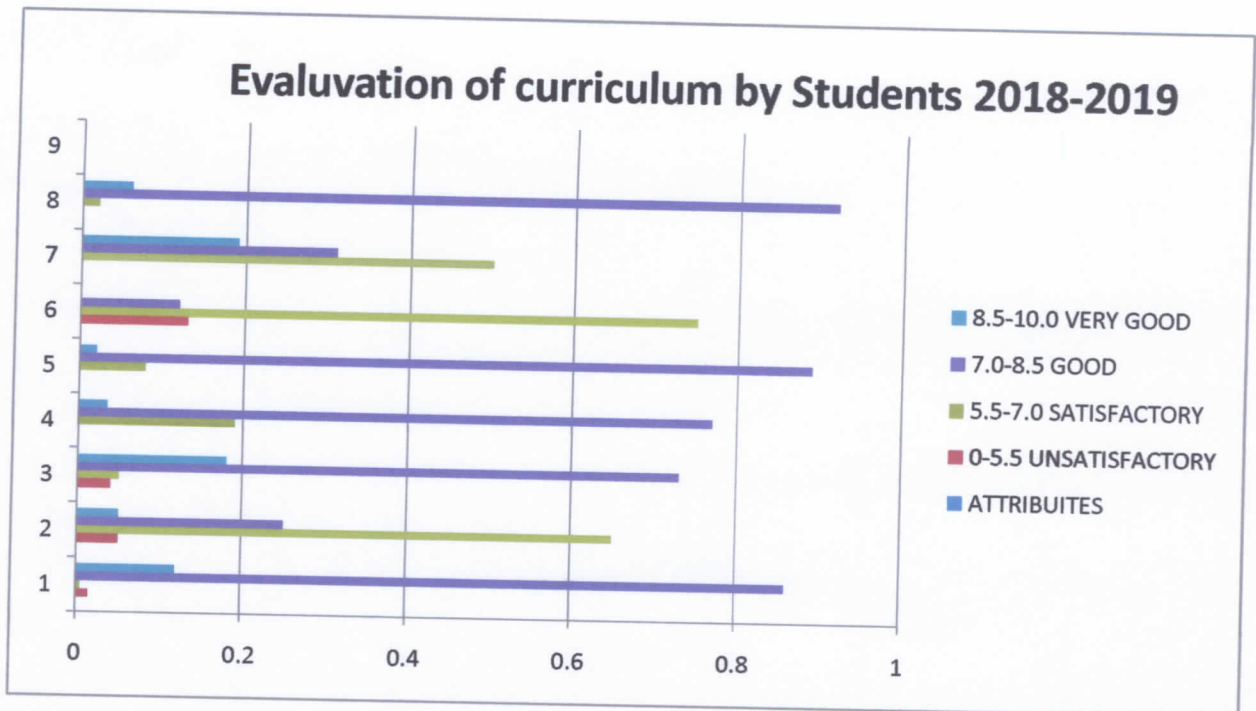
Academic committee of the institute collects feedback on curriculum every year from UG & PG students and from different stake holders such as students, alumni, faculty, and practitioners manually. The forms of students and parents are circulated class wise. All students were informed to submit the filled forms to their class representative within a week. It is class representative's responsibility to collect the forms from students and submit it to the academic committee convener. Practitioner's feedback was circulated among MIDSR staff and they have told to collect feedbacks from their practitioner friend groups. Due to difficulty in communication and connectivity alumni feedback were collected from local alumni's. Questionnaire is designed to measure candidate's perception about academic coursework, evaluation process, teaching experience and overall college functioning.

The feedback forms and the summery of responses was discussed in meeting of academic committee, the discussion and action taken details are as follows



  
**Principal**  
M. I. D. S. R. Dental College,  
LATUR

## Evaluation of curriculum by Students 2018-2019




**RESPONSE** – 500 students out of total 558 UG & PG responded for the feedback

### SUMMARY-

Sr. No.	ATTRIBUTES	0-5.5	5.5-7.0	7.0-8.5	8.5-10.0
		UNSATISFACTORY	SATISFACTORY	GOOD	VERY GOOD
1	Adequacy of the course content	1.50%	0.50%	86%	12%
2	Extent of coverage of Syllabus	5%	65%	25%	5%
3	Applicability/relevance to Clinical practice	4%	5%	73%	18%
4	Learning value (in terms of knowledge, manual skills, analytical abilities)	0%	19%	77%	3.50%
5	Clarity and relevance of textual reading material	0%	8%	89%	2%



  
**Principal**  
 M. I. D. S. R. Dental College,  
 LATUR

6	Availability of additional course material from the library	13%	75%	12%	
7	Extent of effort required by students	0%	50%	31%	19%
8	Overall rating	0%	2%	92%	6%

**MAJOR POINTS**

13% students found availability of additional course material from the library is unsatisfactory.

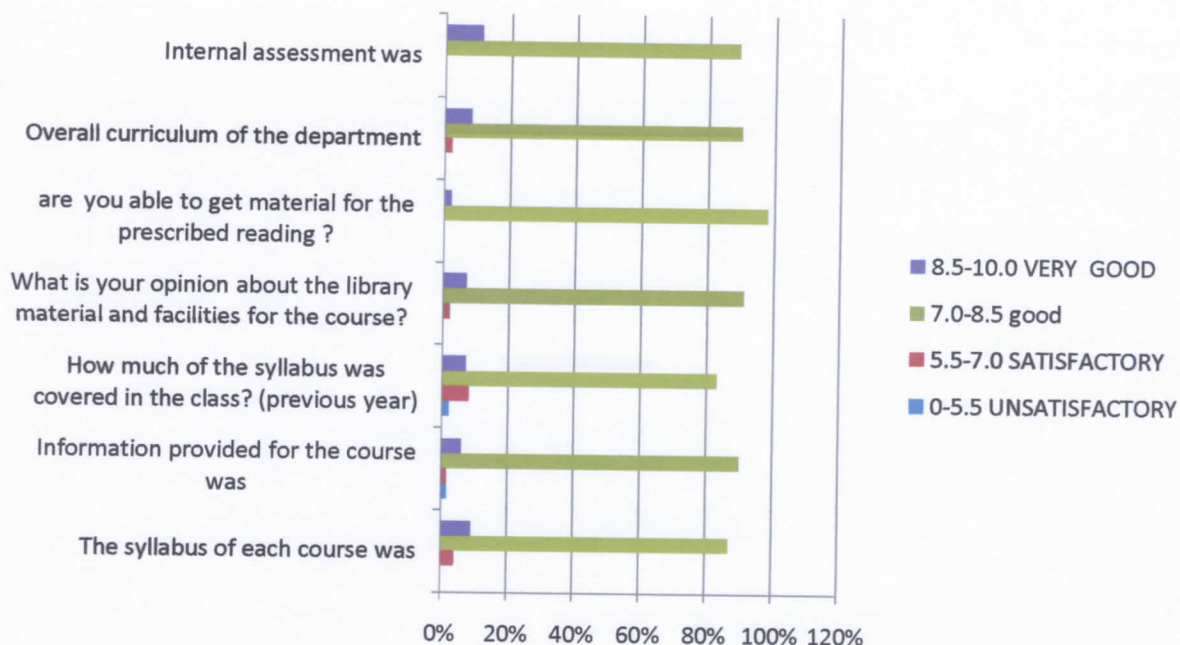
**ACTION TAKEN**

Over all statistics are satisfactory. Academic committee will discuss the additional course material issue with principal sir and library committee for the needful.



  
**Principal**  
 M. I. D. S. R. Dental College,  
 LATUR

## Evaluation of curriculum by faculty 2018-2019



RESPONSE – 87 Faculty Members out of total 87 responded for the feedback

### SUMMARY-

Sr. No.	ATTRIBUTES	0-5.5	5.5-7.0	7.0-8.5	8.5-10.0
		UNSATISFACTORY	SATISFACTORY	GOOD	VERY GOOD
1	The syllabus of each course was	0%	4%	87%	9%
2	Information provided for the course was	1.50%	1.50%	90%	6%
4	How much of the syllabus was covered in the class? (previous year)	2%	8%	83%	7%



Principal  
M. I. D. S. R. Dental College,  
LATUR

5	What is your opinion about the library material and facilities for the course?	0%	2%	91%	7%
6	Are you able to get material for the prescribed reading ?	0%	0%	98%	2%
7	Overall curriculum of the department	0%	2%	90%	8%
8	Internal assessment was	0%	0%	89%	11%



**MAJOR POINTS**

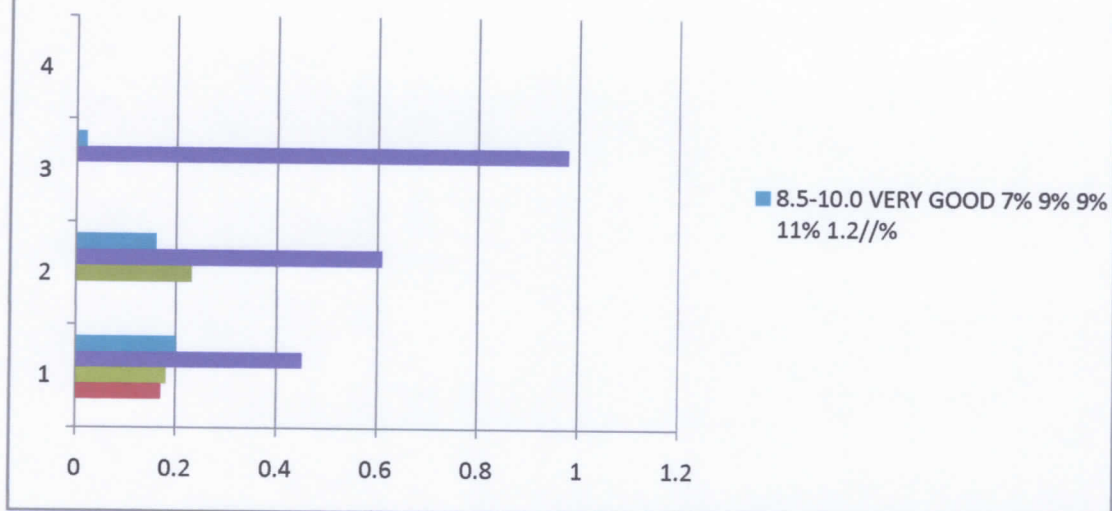
No major issue to discuss

**ACTION TAKEN**

Over all statistics are satisfactory.

  
**Principal**  
 M. I. D. S. R. Dental College,  
 LATUR

## evaluation of curriculum by Interns2018-2019



**RESPONSE** – 45 interns out of total 50 responded for the feedback

### SUMMARY-

Sr. No.	ATTRIBUTES	0-5.5	5.5-7.0	7.0-8.5	8.5-10.0
		UNSATISFACTORY	SATISFACTORY	GOOD	VERY GOOD
1	Adequacy of the course content	0.50%	1.50%	91%	7%
2	Extent of coverage of Syllabus	0%	3%	88%	9%
3	Applicability/relevance to Clinical practice	0%	1%	90%	9%
4	Learning value (in terms of knowledge, manual skills, analytical abilities)	0%	6%	83%	11%
5	Clarity and relevance of textual reading material	1.80%	0%	98%	1.2//%



  
**Principal**  
 M. I. D. S. R. Dental College,  
 LATUR

6	Availability of additional course material from the library	17%	18%	45%	20%
7	Extent of effort required by students	-----	23%	61%	16%
8	Overall rating	-----	-----	98%	2%

**MAJOR POINTS**

17% interns found availability of additional course material from the library is unsatisfactory.

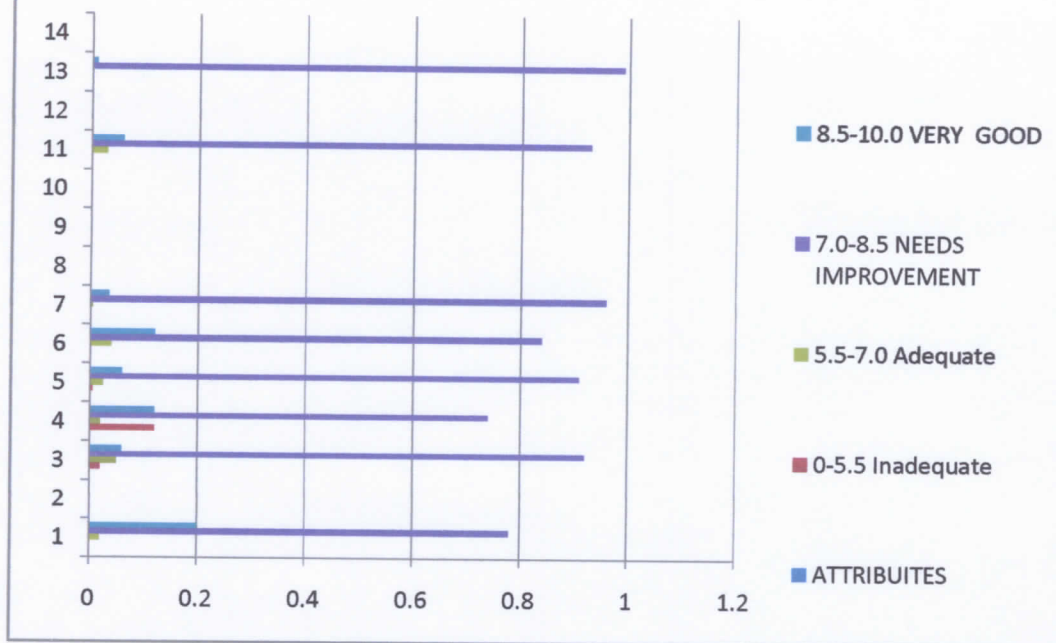


**ACTION TAKEN**

Over all statistics are satisfactory. Academic committee will discuss the additional course material issue with principal sir and library committee for the needful.

  
**Principal**  
 M. I. D. S. R. Dental College,  
 LATUR

## Evaluation of curriculum by Alumni 2018-2019




**RESPONSE** – 56 alumnae responded for the feedback

**SUMMARY-**

Sr. No.	ATTRIBUTES	0-5.5	5.5-7.0	7.0-8.5	8.5-10.0
		INADEQUATE	ADEQUATE	NEEDS IMPROVEMENT	VERY GOOD
1	How do you find curriculum of BDS course for practical & theoretical knowledge	0%	2%	78%	20%
2	Knowledge shared in the course	2%	5%	92%	6%
3	Quality of laboratory and clinical training	12%	2%	74%	12%
4	Adequacy of the curriculum to make you stand in practice	0.50%	2.50%	91%	6%



  
**Principal**  
 M. I. D. S. R. Dental College,  
 LATUR

5	Assessment and examination system	0%	4%	84%	12%
6	Practical and Theoretical knowledge through curriculum system	0%	0.50%	96%	3.50%
7	Overall confidence level as self assessed to practice dental skills	0%	3%	93%	6%
10	Overall Rating	0%	0%	99%	1%

**MAJOR POINTS**

12% Alumni found Quality of laboratory and clinical training is unsatisfactory.

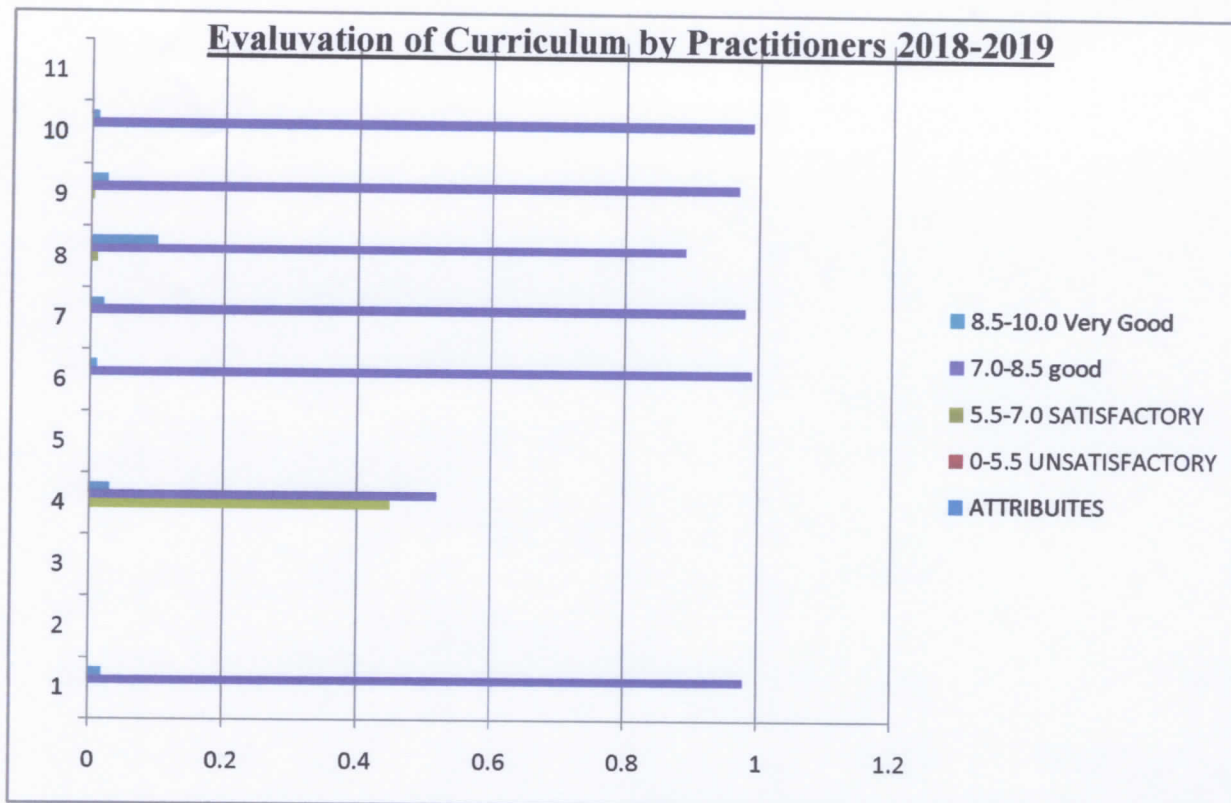


**ACTION TAKEN**

Over all statistics are satisfactory. Academic committee will discuss the issue with principal sir and all HOD and will do the needful to improve the laboratory training .

  
**Principal**  
 M. I. D. S. R. Dental College,  
 LATUR

### Evaluation of Curriculum by Practitioners 2018-2019



**RESPONSE** – 62 practitioners responded for the feedback

**SUMMARY-**

Sr. No.	ATTRIBUTES	0-5.5	5.5-7.0	7.0-8.5	8.5-10.0
		UNSATISFACTORY	SATISFACTORY	GOOD	VERY GOOD
1	Syllabus Effective in Developing clinical skills	0%	0%	98%	2%
2	Knowledge about the procedure.	0%	45%	52%	3%

  
**Principal**  
 M. I. D. S. R. Dental College,  
 LATUR



3	Communication skills and personal development	0%	0%	99%	1%
4	Attitude towards new challenges	0%	0%	98%	2%
5	Knowledge about advanced techniques	0%	1%	89%	10%
6	Ability to display team work and leadership	----	0.50%	97%	2.50%
8	Overall rating	----	----	99%	1%



**MAJOR POINTS**

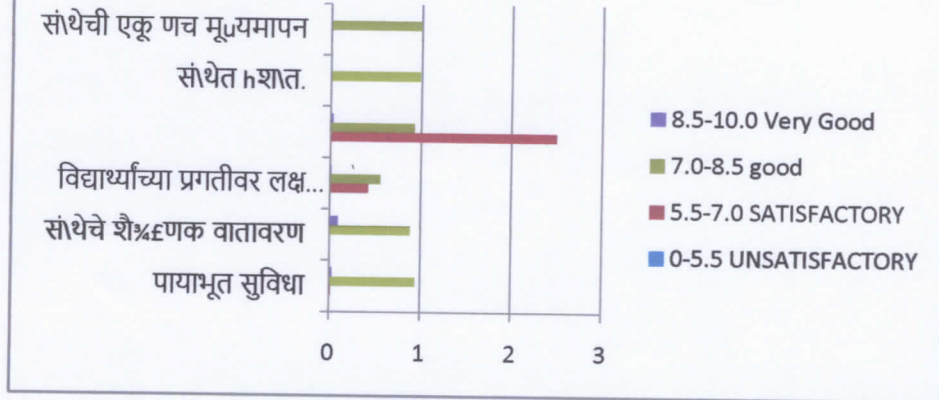
No major issue to discuss

**ACTION TAKEN**

Over all statistics are satisfactory

  
**Principal**  
 M. I. D. S. R. Dental College,  
 LATUR

## CURRICULUM FEEDBACK BY PARENTS 2018-2019

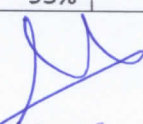


**RESPONSE** – 492 parents responded for the feedback

### SUMMARY-

SR NO	ATTRIBUTES	0-5.5 UNSATISFACTORY	5.5-7.0 SATISFACTORY	7.0-8.5 good	8.5-10.0 Very Good
1	□□□□□□□□ □□□□□□	0	2%	95%	3%
2	□□\□□□□ □□ <sup>३५</sup> णक		1%	89%	10%
3	□□□□□□□□□□□□□□ □□□ □□□□□□□□ □□□□ □□□□□□□□□□□□ □□□□□□□□□□□□ □□□□□□□□		42%	56%	2%
4	□□□□□□□□□□□□ □□□□□□□□□□ व		2.5	93%	3%



  
**Principal**  
 M. I. D. S. R. Dental College,  
 LATUR

5	□□\□□□ हश\त.			99%	1%
6	□□\□□□□ □□□ णच u			100%	



#### MAJOR POINTS

No major issue to discuss

#### ACTION TAKEN

Over all statistics are satisfactory

#### Conclusion

Over all conclusions of the summary and the discussion suggest

- Institute should improve the accessibility of library content so that all available library Material will be easily approachable for all students.
- More innovative ways to teach practical should be incorporated. more efforts from faculty members regarding the same is expected.

  
 Principal  
 M. D. S. R. Dental College,  
 LATUR